

TECHNICAL DATA SHEET

WIRE MESH LIFTER (MANUAL) - 2000KG

FWMA-4020



DESCRIPTION

This FWMA-4020 Wire Mesh Lifter attachment converts your forklift, crane or Hiab into a dual-purpose vehicle and allows for the safe loading and unloading of bulky reinforcing mesh. Whether it be at your warehouse or construction site, this economical solution reduces risk of damage to your material and downtime during transfers.

FEATURES

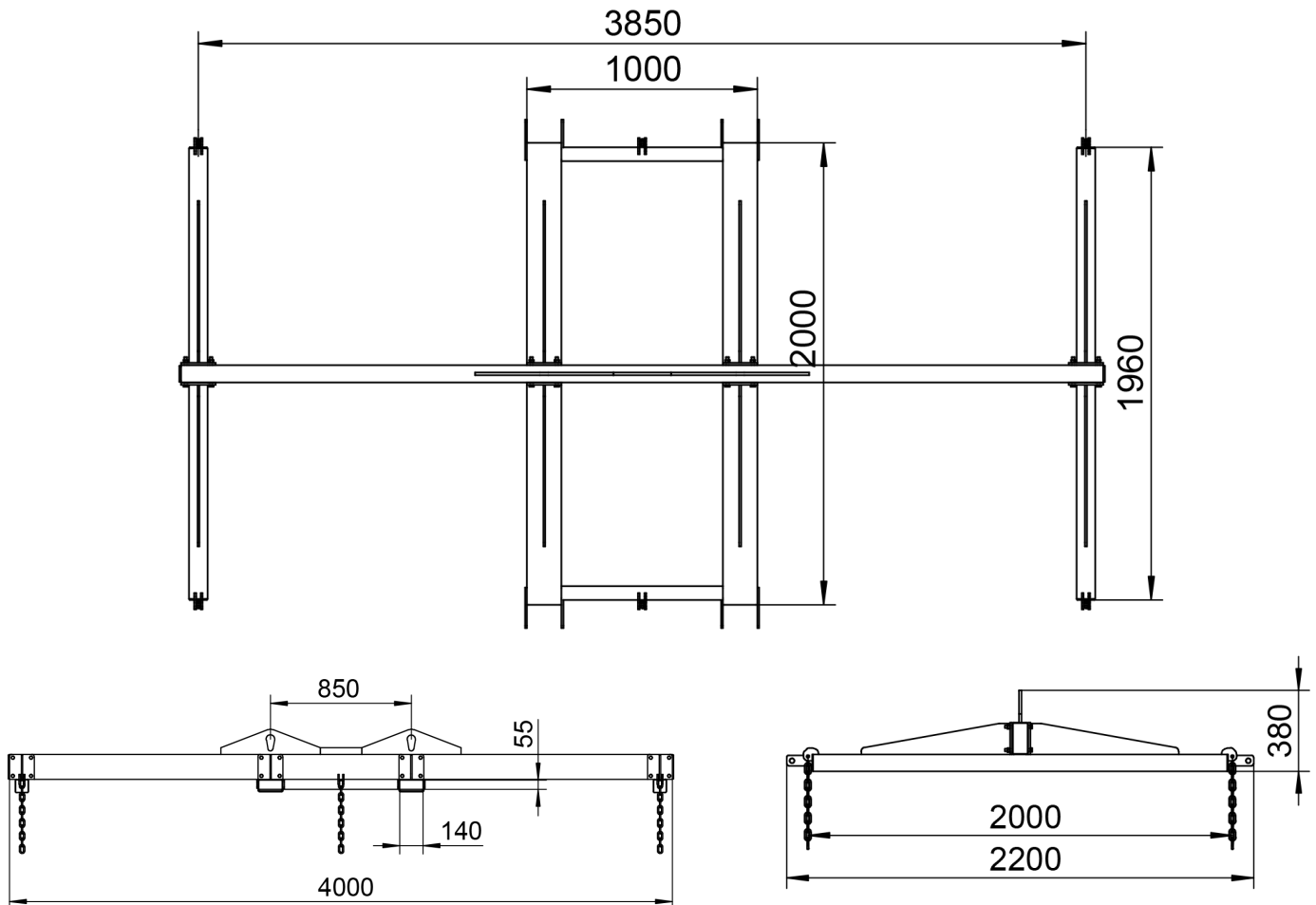
- ☒ Ideal for loading and moving wire mesh panels
- ☒ Chain and hooks supplied
- ☒ Chain length 1.20m
- ☒ Slip on attachment with safety pins for connection
- ☒ Safety yellow painted finish



TECHNICAL DATA SHEET

WIRE MESH LIFTER (MANUAL) - 2000KG

FWMA-4020



SPECIFICATIONS

WORKING LOAD LIMIT	OVERALL LENGTH	OVERALL WIDTH	FORK POCKET SIZE	FORK POCKET CENTRES	UNIT WEIGHT
2000kg	4000mm	2000mm	140 x 55mm	850mm	270kg

CERTIFICATION

Manufactured strictly in accordance with the following standards:

STANDARD	DESCRIPTION
AS 3990-1993	Structural Steel for mechanical engineering
AS 2359.1-1995	Powered Industrial Trucks
AS 1554	Structural Steel Welding